

AR360

PERFORM WITH AIQ

# THE CHALLENGE










**A Field Development Plan (FDP) provides the best technical solution and guide for optimizing the development and production of an oil or gas field.**

FDP studies outline the necessary information for operators to assess all the economic decisions required to make a positive economic return from working a field.

Central as they are to field investment and operation, FDPs can be complicated by factors such as reservoir structure uncertainty, petrophysics, the potential for well anti-collision, and fluid flow dynamics. This range of possibilities requires inputs from multiple disciplines, currently working in silos.

**Poor initial characterization of reservoirs, and not fully integrating available development technologies can adversely affect evaluating the amount of recoverable reserves from an Asset.**

**This can lead to an inaccurate estimation of recovery.**

SUBSURFACE & SURFACE		PRODUCTIVITY		INTEGRATION			
	Large number of inactive strings		Challenging reservoir water dynamics		Large model size with long runtimes		Lack of integration leads to fallback in production guidance
	Challenging recovery due to reservoir complexity		Well placement in complex reservoirs		Time-consuming model review & opportunity generation		Rapidly outdated models requiring frequent updates
	Complex reservoir fluids types						



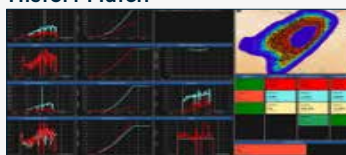
# THE SOLUTION

AR360 (Advanced Reservoir 360) is an intelligent reservoir management and short-term production optimization solution offering a comprehensive 360° view of your reservoir by integrating various workflows. It consists of 3 key modules:

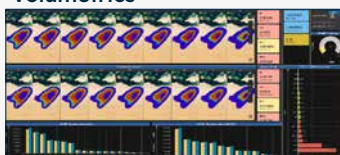
# 1

## Digital Reservoir Model Reviewer (DRM)

History Match



Volumetrics



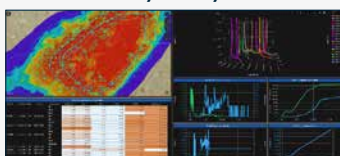
Perm. Multipliers



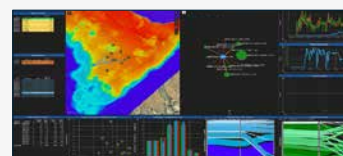
Pressure/RFT/MDT



Connections / VFP / SCAL



Streamlines



- Automated Assessment of Reservoir Model Quality and predictive capability
- Advisory system to enhance future model generation

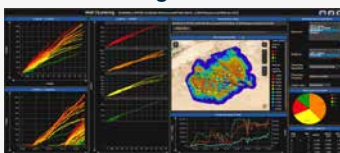
# 2

## Reservoir Performance Advisor (RPA)

Type Well Analysis



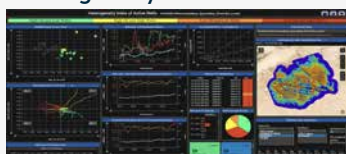
Well Clustering



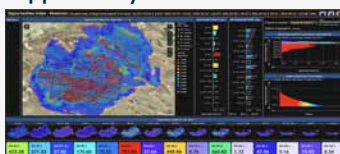
Chan Analysis



Heterogeneity Index



Opportunity Index



Sweep Efficiency



- Automated assessment of Production Performance and a recommendation system for workover candidates selection
- Identify opportunities to maximize recovery factor

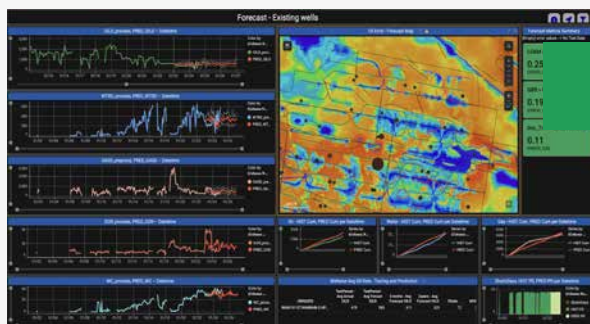


# THE SOLUTION

3

## AI-Assisted Production Forecast (AI-PF)

### Existing Wells – Intelligent Production Forecast



### Short-term Production Planning



- AI-Assisted Production forecast leveraging ML and Physics (Mins vs Days)
- Generate Multi-Scenario data driven production profiles to optimize in-fill well placement

4

## Integrated Workflows

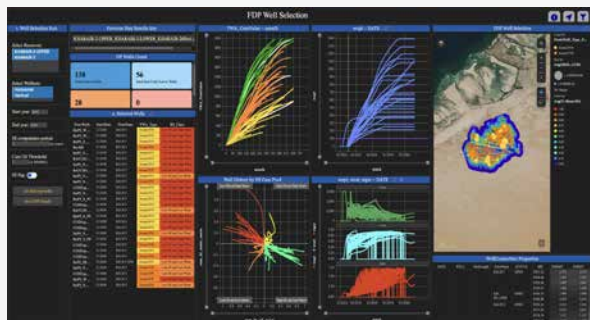
### Well Workover Candidate Selection



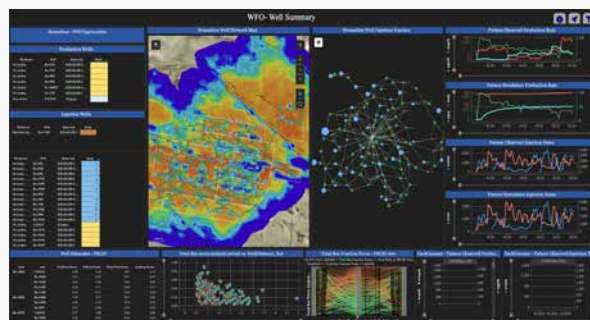
### Injectors Workover Candidate Selection



### Agile Field Development Planning (AFDP)



### Streamlines Based Waterflood Optimization



- Identify poor-performing wells and recommend workovers
- Optimize new well plans through FDP quality assessment
- Enhance waterflood efficiency via streamline pattern analysis

# VALUE & BENEFITS



## AR360

PERFORM WITH **AIQ**

An intelligent reservoir management and short-term production optimization solution offering a comprehensive 360° view of your reservoir by integrating various workflows.



**Up to 10%**

Enhance oil recovery from water flooding operations



**100X**

acceleration of reservoir understanding



**75%**

Efficiency gain in reservoir model reviews



**10X**

10X faster decision making



**Up to 20%**

Extension in life of active wells



**Up to 10%**

Cost reduction in drilling new wells



**DISCLAIMER**

This booklet contains numerical data that has been sourced from our esteemed clients. It is important to note that these figures are provided in the context of their respective business operations and have been shared with us for the purpose of this booklet.

Please be aware that client-sourced data can be subject to various factors that may influence its interpretation.

**COPYRIGHT ©2025 ALL RIGHTS RESERVED**